

General Notes

1. Drawings must not be scaled; work only to figured dimensions.
2. Drawings must be read in conjunction with all other relevant drawings, schedules and specifications for this project.
3. All dimensions to be checked on site before and during construction by the Contractor.
4. Shop drawings of manufactured items must be approved by the Architect before work is put in hand.
5. The Architect must be notified of any discrepancies immediately.
6. If in doubt, ask!

revisions

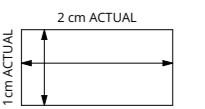
ID	description	drawn	date

changes

--

drawing status

DESIGN

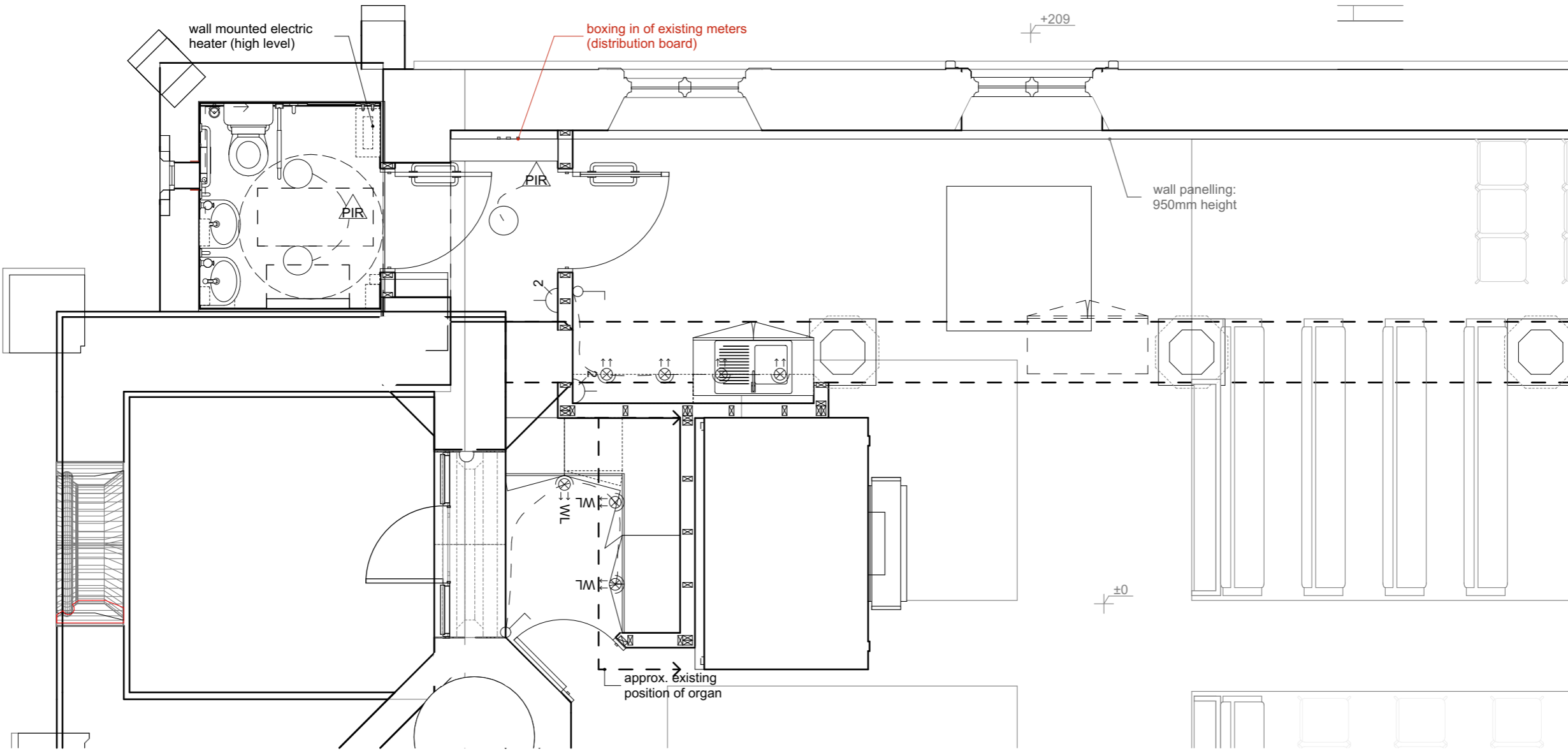


IF THE ABOVE DIMENSIONS DO NOT MEASURE TWO CENTIMETERS BY ONE CENTIMETERS (2 cm x 1 cm) EXACTLY, THIS DRAWING WILL HAVE BEEN ENLARGED OR REDUCED, AFFECTING ALL LABELED SCALES.

project name
The PCC of St Mary's Church,
Houghton with Wyton
St Mary's Church
3 Mill Street
Houghton, Huntingdon
PE28 2AZ

date: 21/12/2023
scale: AS NOTED
drawn: JMB
paper: A3

project number	drawing number	revision
0304	531	a



MEP Systems Plan - GF

1:50

Electrical Schedule

2D Plan Preview	Element ID	Manufacturer	product / range / notes	light temperature	Supplied by	Lighting circuit	Quantity
	wall mounted electric heater (high level)	TBC - contractor's choice			main contractor		1
	Double power socket	TBC - contractor's choice			main contractor		2
	Light switch	TBC - contractor's choice			main contractor		2
	PIR light switch	TBC - contractor's choice			main contractor		2
	Pendant ceiling light	Nordlux	Alton 23	(employer supply lamp) 3000K	employer		3
	Wardrobe lighting	TBC - contractor's choice			employer		3
	Circular integrated LED pendant fitting	TBC - contractor's choice	Vogue wheeler		employer		4

drawing title
Electric Plan - GF